



AUTOMATIC LOADING / UNLOADING

PaperOne Digital Converting





Company

Since 1982 we are the partner who offers innovative and tailor-made solutions to our customers. Thanks to our know-how and continued investments in R&D, we provide laser systems that guarantee significant performances in terms of costs, operational efficiency and final quality product. The solutions that we propose for the converting market ensure high-performances; a philosophy of modularity on flexible platform that can be expandable and upgradeable to suit different production needs, such as "Flexible Packaging", "Folding Carton", "Graphic Arts", "Labeling" solutions. Thanks to our technology, nowadays the Converting market has the possibility of growth and development truly revolutionary.

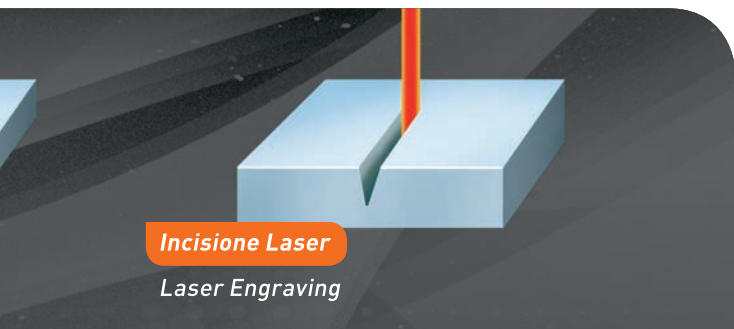
We produce all our laser systems in Curno and Buja production sites. All the stages of the production process are fundamental. Each mechanical, electronic or optoelectronic component is produced internally and tested carefully before assembly. We produce and test our laser systems, we develop the firmware & software. A state-of-the-art technology requires commitment; our history is based on loyalty and mutual respect with customers. This alchemy enables us to establish strong connections with our customers which last for decades and are constantly renewed.

VISION

We work so that our innovative solutions help find new opportunities and new business for customers.

"Revolutionary Generation": this is SEI Laser.





AUTOMATIC LOADING / UNLOADING

Paper design and packaging

PAPERONE Line is the innovative range of SEI Laser systems, with an **automatic paper transportation**, developed for the Graphics Arts and Folding Carton industry and that breaks down the design limits. Thanks to the different options they are equipped with, these systems allow you to overcome the technical complexities of each design and implementation: micro-perforation, micro die cutting, photographic micro-perforation are only some of the effects that can be made by exploiting the **PAPERONE** Line.

Laser Technology: advantages

Nowadays, the number of custom-designed products is growing: all the production process stages have to ensure maximum flexibility to satisfy this trend. Thanks to laser technology, this flexibility is a reality.



PAPERONE Line is the world's leading range of laser cutting and engraving systems for paper and cardboard that enables to produce both sophisticated paperwork, especially when extreme precision is required, and packaging with customized graphics and shapes. **PAPERONE** Line also allows to benefit from fast change jobs and to avoid waste of materials with a consequent time and cost savings for their disposal.

Customization on Demand

PAPERONE Line turns your dream of producing small customized production line batches into reality. **PAPERONE** Line enables the real "web to packaging and web to paper design"!

PaperOne 3500 | FOCUS ON GRAPHIC ARTS

PAPERONE 3500 is a flexible, technologically advanced system for laser based converting and decorating of sheet materials specially designed for the **Graphic Arts** industry.

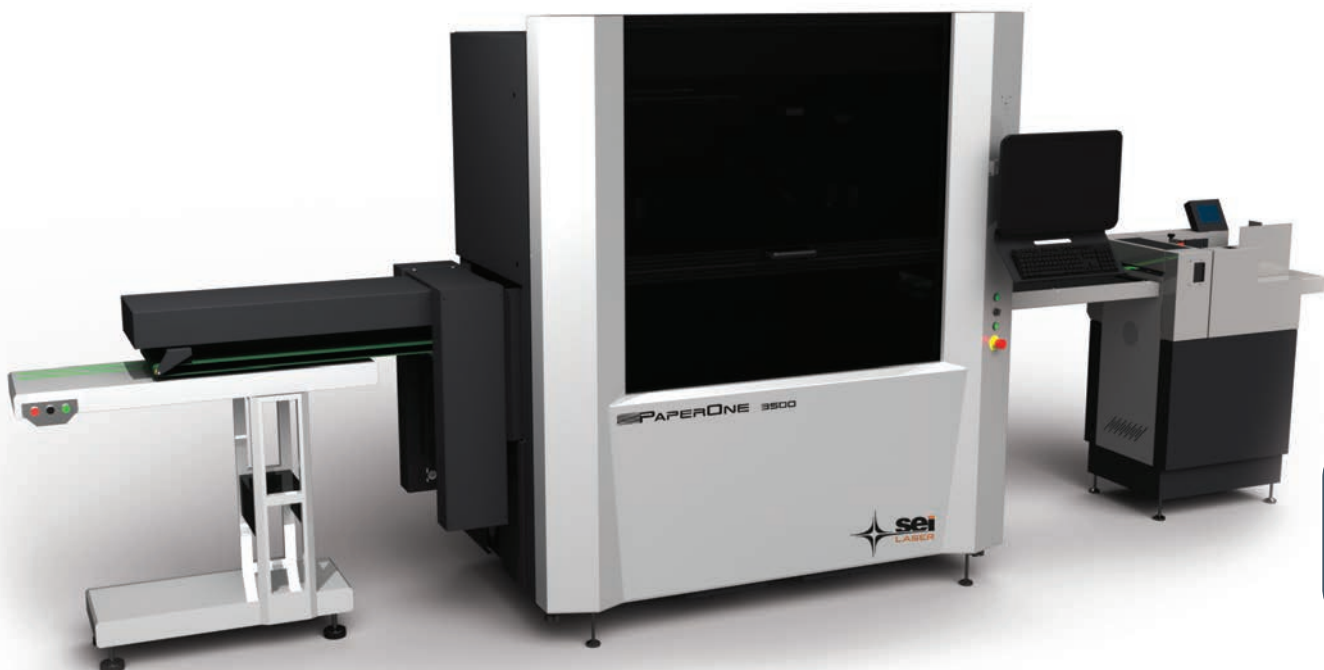
PAPERONE 3500 is the new fully automatic laser based solution for real time creasing and die-cutting. The system die-cuts, micro-perforates, decorates and creases both sides of the sheet (front/back) depending on the job and design.

PAPERONE 3500 has a precise mechanical registration system, in addition to a digital

camera based registration system and it is available in 3 laser configurations to meet the most demanding needs.

PAPERONE 3500

- Sheet size input up to 375 x 1050 mm
- Substrate thickness: 0,09 - 0,6 mm
- Productivity up to 2500 sheets/h
- Substrate types: PAPER, PET, PP, BOPP
- Sheet format: Portrait
- Automatic feeder
- Alignment table
- Male/female vertical creasing module
- Laser die-cutting module
- Mechanical and optical registers
- Autosetting
- Full digital workflow integration
- Barcode-QRcode reading
- Full laser customization: single scanning head from 150 up to 500 W
- Conveyor belt stacking system
- Fume exhaust system
- Waste collector automatic stacker





AUTOMATIC LOADING / UNLOADING

PaperOne 5000 | FOCUS ON PACKAGING & FOLDING CARTON



PAPERONE 5000 is the most technologically advanced system for digital converting and finishing of sheet materials. Specially designed for the **Packaging** and **Folding Carton** industry, it is the new modular laser based solution for real time die-cutting and creasing. The system can be configured according to the customer's needs either at the time of purchase or at any time. It is fully "auto-setting" and remotely controlled and it has a precise mechanical registration system in addition to a digital camera based registration system.

PAPERONE 5000 is available in 6 laser configurations. It is designed to meet even the most demanding production requirements.

PAPERONE 5000 die-cuts and creases both sides of the sheet (front/back) depending on the graphic and design jobs required. The system utilizes ProCrease PaperOne, an innovative proprietary creasing system exploiting a male/female concept developed by SEI Laser.

A stand alone innovative station allows to quickly and simply create their own creasing plates.

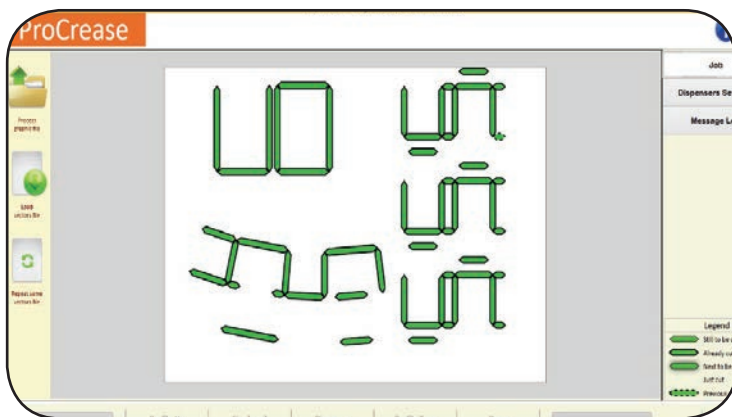


PAPERONE 5000

- Max sheet size: B2 - 750 x 535 mm
- Substrate range: 0,15 – 1,5 mm
- Productivity: up to 2500 sheet/h
- Substrate types: PAPER, CARDBOARD, PET, PP, BOPP
- Manual or pallet loading automatic feeder
- Automatic pallet loading stacker
- Sheet format: portrait
- Mechanical and optical registers
- Autosetting
- Barcode-QRcode reading
- Full digital workflow integration
- Alignment table
- Waste collector automatic stacker
- Sheet brushing module
- Male/female vertical creasing module
- Full laser customization: single or double scanning head from 150 w up to 500 w
- Fume exhaust system



Why SEI Laser?

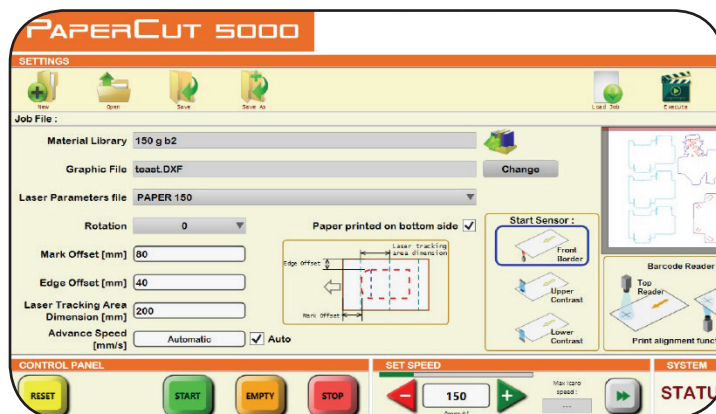
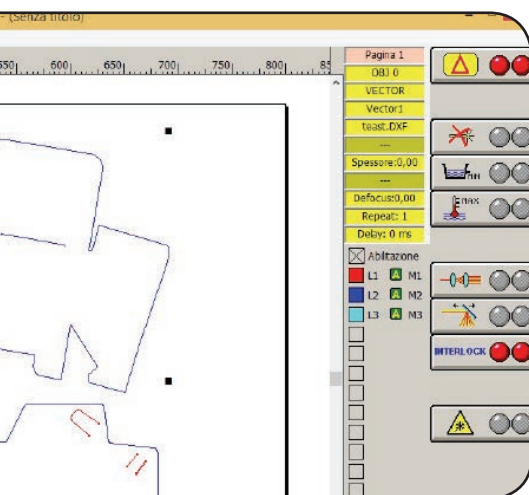


*Cordonatura
Creasing*

SOFTWARE ICARO

Our proprietary Icaro software, which is very intuitive, user-friendly and innovative, has been developed specifically by SEI Laser for Graphic Arts and Packaging industry.

The easy import of the files and the easy setting of the laser parameters make Icaro the innovative multifunction software interface made 100% SEI Laser. It is also possible to verify the progress of the process by video.



*Controllo
del flusso
di lavoro*

*System
& Workflow
Control*

FULL DIGITAL WORKFLOW INTEGRATION

PaperOne Line perfectly fits in your workflow, no waiting time, no supply and transport costs. PaperOne Line is designed to make die cut digital and virtual; it is impossible for the operator to make mistakes thanks to its auto-setting system. PaperOne Line, thanks to the full digital workflow (from the PDF to the shipment), receives information on the work to carry out, updating the work status and creating real time feedbacks to optimize the production process.

**SEI S.p.A.**

Via R. Ruffilli, 1
24035 Curno (BG) - Italy
T. +39 035 4376016
F. +39 035 463843
info@seilaser.com

www.seilaser.com

**SEI Laser Systems
(Hangzhou) Co. Ltd.**

Hangzhou Hi-Tech Park,
Bin Jiang District, Bin An Road
#1193, Post Code 310052
Hangzhou - China
T. +86 571 8777 4111
F. +86 571 8777 444

SEI Deutschland GmbH

Moosweg 9
D-82386 Huglfing - Germany
T. +49 8802 913600
F. +49 8802 9136066
info@seigmbh.de

www.seilaser.de

**SEI Laser
France**

12 Quai du commerce
69009 Lyon - France
T. +33 4 26 10 08 23
france@seilaser.com

www.seilaser.fr

SEI Laser Converting

Via Praz dai Trois, 16
33030 Buja (UD) - Italy
T. +39 0432 1715827
F. +39 0432 1715828
info@seiconverting.it

www.seilaser.com

