

Optional Items



Specification		Spirit LS
Work Area		25 x 18 in. (640 x 460 mm) Extendable to 29 x 18 in. (740 x 460 mm)
Max. Part Size (W x L x H)	All doors closed	31.5 x 22.4 x 6.5 in. (800 x 570 x 165 mm)
	All doors open	26.8 x ∞ x 6.5 in. (680 x ∞ x 165 mm)
Table Size		31.1 x 20.9 in. (790 x 530 mm)
Dimensions		44.3 x 28.3 x 39.6 in. (1125 x 720 x 1005 mm)
Laser Source		12 to 100W 10.6-μm sealed CO2 Laser / 20W & 60W 9.3-μm sealed CO2 Laser
Cooling		Air-cooled. Operating environment temperature 15° - 30°C (60° - 86°F)
Drive		Closed-loop DC servo control
Maximum Motor Speed		80 IPS**
Throughput*		260.9 in ² / hr (1683 cm ² / hr)
Throughput* with SmartACT™ Enabled		322.1 in ² / hr (2078 cm ² / hr)
Speed Control		Adjustable from 0.1-100% (Up to 16 color-linked speed settings per job)
Power Control		Adjustable from 0-100% (Up to 16 color-linked power settings per job)
Distance Accuracy		0.254 mm or 0.1% of move, whichever is greater
Z-Axis Movement		Automatic
Focus Lens		Standard 2.0", optional 1.5", 2.5", & 4.0" available
Resolution (DPI)		Available 125, 250, 300, 380, 500, 600, 760, 1000, 1500
Computer Interface		Standard printer port and USB 2.0** port
Compatible Operating Systems		MS Windows
Memory Buffer		32 MB standard
Display Panel		4-line LCD display showing current file name, total working time, laser power, engraving speed, file(s) loaded into memory buffer, setup and diagnostic menus
Safety		Class 2 for red pointer
Operation Voltage		100-240 Volt AC Auto Switching for 30 Watt and below; 200-240 Volt AC Auto Switching for 40 Watt and above models
Power Consumption		700W - 4400W
Air Exhaust System		External exhaust system is required, one 4" connection on the back of the machine

* Speed does not equal to throughput. See dealer or visit www.GCCworld.com for more details.

** For 30W and above models. (60 IPS for 12W & 25W models)

** File transmission at USB 2.0 Full Speed rate.

Δ Specifications are subject to change without prior notice.

Authorized Dealer



www.GCCworld.com

GCC Headquarters 4F, No.236, Fude 2nd Rd., Xishi Dist., New Taipei City 22151, Taiwan 886-2-2694-6692 Fax: 886-2-2694-6875
 GCC China No. 1, Chen Feng Road, Yushan, Kunshan, Jiangsu 215300, China 86-512-6726-1515 Fax: 86-512-6726-1518
 GCC Europe B.V. Egplantenbaan 43-45, 2009 LV, Capelle aan den IJssel, The Netherlands 31-10-458-9367 Fax: 31-10-451-9874
 GCC America, Inc. 323 Paseo Tesoro, Walnut, CA 91789, USA 1-909-718-0248 Fax: 1-909-718-0251
 U.S. & Canada Only Tel/Fax: 1-888-284-5211



Laser Engraver

GCC LaserPro Spirit LS

Smart Innovative Evolution at Its Best



Spirit LS

- 25" x 18" (640 x 460 mm) working area
- Up to 80 IPS high working speed
- Patented SmartACT™ motion control technology for higher throughput
- Closed-loop DC servo motor for precise movement of laser carriage
- Reliable DuraGuide motion system with reinforced Kevlar belt delivers superb output quality
- Pass-through front and rear doors to accommodate long working pieces
- Plug and play standard USB port for rapid data transmission
- Patented SmartGUARD™ fire alarm device to provide maximum operation safety





Laser Engraver

GCC LaserPro Spirit LS

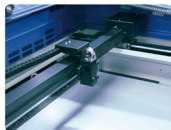


GCC LaserPro Spirit LS

LaserPro Spirit LS distinguishes itself from the competition by combining output quality, reliability, and user-friendliness. With an abundance of useful and innovative features, the Spirit LS sets the standard as the industrial benchmark for laser engravers.

DuraGuide

Systematic and reliable motion system embedded with strong mechanical framework, reinforced Kevlar belts, and accurate servomotor control technology to deliver superb output quality under rapid movement.



SmartPIN Auto Focus

The plug-and-play probe design makes focusing a one-touch process and provides the accuracy and precision required for optimum quality in the lasing process.

SmartLID™

An innovative lid that opens from both ends allowing easier access for daily maintenance.



Pass-through Front and Rear Doors

Convenient front and rear door design enables loading of extremely long working pieces.

SmartACT™ (Patented)

Ground-breaking technology that reduces the ramping process, the job running time, which translates into higher productivity.

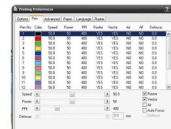


Key Switch & Emergency Stop

Key switch safeguards the machine from unauthorized use. Prominent emergency button located on the top of the machine allows operators to stop the laser and the motion carriage immediately to provide a safe operating environment.

Easy to Use Control Panel

A control panel with coherent hot-key design and graphic icon displays that allows you to directly change the laser parameter setting, set jobs to repeat unlimited times, queue jobs, delete jobs, and more.



Innovative Software Features

Various user friendly features such as SmartCENTER, Defocus by pen, allows users to reduce set up time and make easy adjustments to achieve marvelous output quality.